



ART

Instructions

CHOOSE THESE!

For the best results please choose from the following list of mediums

- Markers
- Tempera or Acrylic Paints
- Crayons (press hard)
- Paper Collages
- Photos
- Bold Intense Watercolors
- Black Marker for outlining

DO NOT use these!

We can NOT process artwork that has any of the following

- Glitter - of ANY kind
- Abrasives (sand, salt, etc.)
- 3D materials
- Scratch art/Scratch board
- Copyright/trademark items*
- STICKY/MESSY artwork**
- Fluorescent, neon & metallic***
- Colored or lead pencil ****



PAPER

For the best results please use the provided art paper.

- Size: all paper should be: 8 1/2" x 11"
- Recommended weight: 60-70#
- Construction paper - often does not reproduce true to color. Blues can look purple, blacks can look grey or green etc. *Use with caution.*



© copyright/trademark items*

Due to existing copyright laws we cannot accept copyright images. This includes but is not limited to: images, logos, brand names, emojis, video, cartoon & anime characters, stickers, magazine and newspaper prints. **If you are unsure we recommend you do another project.**



STICKY/MESSY artwork**

We cannot process artwork that is sticky, or comes off on your hands.

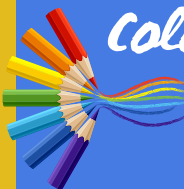
- Chalks, Oil Pastels & Cray Pas - MUST be sprayed **and** cannot be sticky or come off on your hands when touched.



Fluorescent, neon & metallic***

These mediums do NOT reproduce true to color. To avoid unhappy families, please avoid using them.

Colored or lead pencil ****



Pencil drawings are usually VERY light and do not reproduce well. Although we won't return them, we recommend using a different medium for the project.



Try This!

Rub your hand across the artwork.

If residue comes off on your hand we will not be able to process it. Please re-spray the artwork with a fixative.



Try This!

Hold the artwork across the room. Can it be seen clearly?

Yes - Great! Your art will reproduce well.
No - Darken areas that are too light to be seen. Outline details with marker.

ART Tips

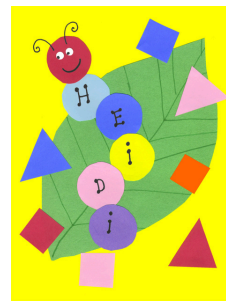
Please review these tips to create artwork that will reproduce well.

Create art that sells!

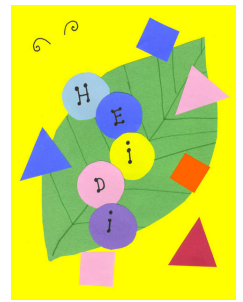
- Skin tones must be heavily covered and as opaque as possible
- Recolor & repaint any lightly colored areas
- Erase unwanted marks, pencil lines and smudges
- Trim excess paper that hangs over the edge of the paper
- Consider using a black marker to outline details
- Have artists sign and date their masterpiece (use our Signature Template to avoid the edge)



Fill the entire art paper.



Secure all pieces of collages to ensure they don't fall off.

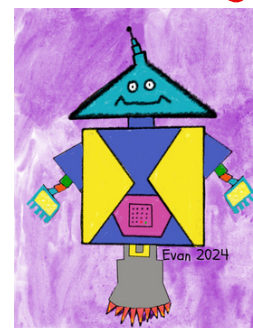
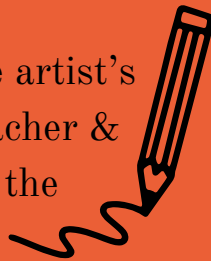


Add 1" border to keep details from the edge. Erase guide lines.
Cropping can occur during reproduction!



Completing the project

- **Identify the artwork**
 - Using pencil- write the artist's first and last name, teacher & grade on the **BACK** of the artwork
 - Applying labels? Apply the label to the **BACK-TOP** of the artwork after the project is completed.
- **Artwork orientation**
 - Using pencil - place a "T" on the **BACK- TOP** of the artwork to ensure proper orientation



Use bright, vibrant colors! Pencil and lightly colored art will not reproduce or will appear washed out on products